

Asure ID 2009 Software Installation Guide property of HID Global Corporation

Reorder number: L001266 Rev C

Document Number: L001268 Rev. 1.2

© 2009 HID Global Corporation. All rights reserved.

The information contained in this document is provided “AS IS” without any warranty.

HID GLOBAL HEREBY DISCLAIMS ALL WARRANTIES AND CONDITIONS WITH REGARD TO THE INFORMATION CONTAINED HEREIN, INCLUDING ALL IMPLIED WARRANTIES OF MERCHANTABILITY, FITNESS FOR A PARTICULAR PURPOSE, TITLE AND NON-INFRINGEMENT.

IN NO EVENT SHALL HID GLOBAL BE LIABLE, WHETHER IN CONTRACT, TORT OR OTHERWISE FOR ANY INDIRECT, SPECIAL OR CONSEQUENTIAL DAMAGES ARISING FROM USE OF INFORMATION CONTAINED IN THIS DOCUMENT.

Windows is a registered trademark of Microsoft Corporation in the United States and other countries.

Revision Control Number	Date	Document Title
Rev. 1.2	April 2009	Asure ID 2009 Installation Guide (Rev. 1.2)

These reference documents were thoroughly reviewed to provide HID Global with professional and international standards, requirements, guidelines and models for our technical, training and user documentation. At all times, the *Copyright Protection Notice* for each document was adhered to within our HID Global documentation process. This reference to other documents does not imply that HID Global is an ISO-certified company at this time.

- ANSI/ISO/ASQ Q9001-2000 American National Standard, (sub-title) Quality Management Systems - Requirements (published by the American Society of Quality, Quality Press, P.O. Box 3005, Milwaukee, Wisconsin 53201-3005)
- The ASQ ISO 9000:2000 Handbook (editors, Charles A. Cianfrani, Joseph J. Tsiakals and John E. West; Second Edition; published by the American Society of Quality, Quality Press, 600 N. Plankinton Avenue, Milwaukee, Wisconsin 53203)
- Juran's Quality Handbook (editors, Joseph M. Juran and A. Blanton Godfrey; Fifth Edition, McGraw-Hill)

Any questions regarding changes, corrections, updates or enhancements to this document should be forwarded to:

HID/FARGO Support Services
6533 Flying Cloud Drive
Eden Prairie, MN 55344 (USA)
(952) 946-0050
www.fargosupport.com

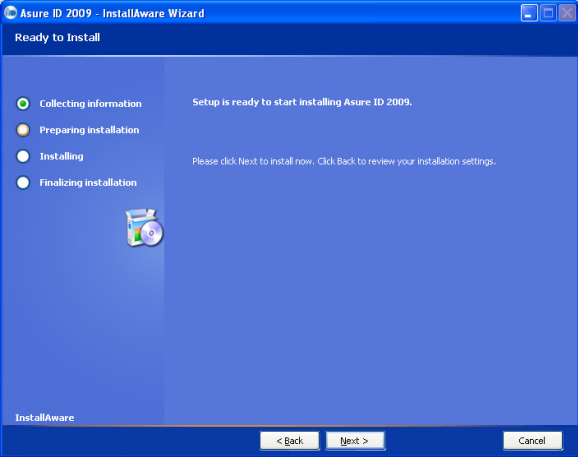
Installing the Asure ID 2009 Software Program

Step	Procedure
1	<ul style="list-style-type: none"><li data-bbox="635 365 1099 566">a. Close down all programs and insert the Software Installation CD into your computer's CD drive. After a few seconds, the CD's software installer program will automatically open.<li data-bbox="635 589 1099 925">b. Follow the CD's on-screen Procedures to complete installation. (Note. If the CD does not automatically open, use "My Computer" or "Windows Explorer" to view the contents of the CD. Then, double-click on the Asure ID 2009 Setup exe file listed on the CD.)<li data-bbox="635 947 1099 1037">b. Select the appropriate language for this installation and setup.<li data-bbox="635 1059 1099 1126">c. Click on Next to continue with the installation.

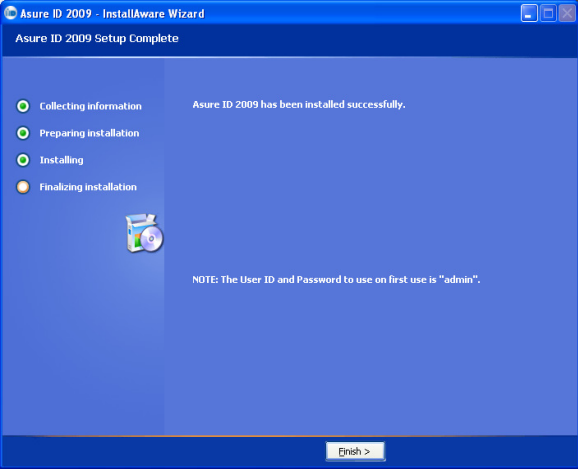
Step	Procedure
2	Click Next after reading the license agreement and selecting the I Accept radio button.



Step	Procedure
3	Click Next to start installing Asure ID 2009.



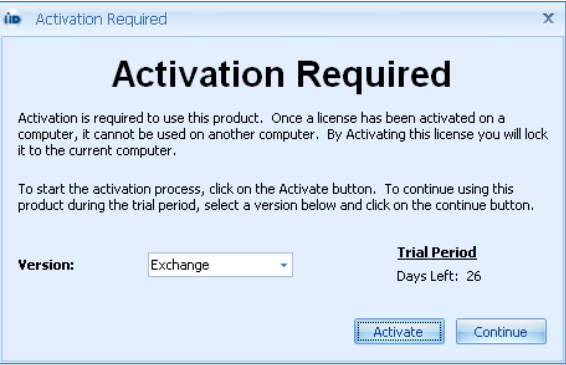
Step	Procedure
4	a. Click Finish to exit.



Step	Procedure
5	For the initial login: Use admin for User ID and Password to start. These may be changed later.



Step	Procedure
6	<p>Select Activate to enter the Activation Key located on the backside of the software package.</p> <p>(Note: For web download and the Asure ID 2009 Trial Version, click Continue.</p> <p>The software will remain active for the next 30 days.)</p>



Step	Procedure
7	Fill in the user information. (This is used to look up the serial number should it be lost) Enter the License Key and select Phone Activation or Active Online.

LicenseForm

Activate License

First Name:

Last Name:

Company Name:

State / Province:

Country:

License Key:

Phone Activation Activate Online

AsureID

System License: **None**

License Level: **Trial**

Additional Licenses:

Close

(Note: Review the HELP file for instruction on password changes as well as all instruction on how to use this program). The HELP file is located by clicking on the RED Question Mark at the upper right corner of the AsureID 2009 Menu bar.

