

ATR220 - HID® TripTick™ Halo

Barcode, NFC, contactless
EMV reader



ANY TOKEN...ONE READER

The state-of-the-art TripTick Halo series includes options for barcode reading, NFC/RFID reading and contactless EMV payments.

The ATR220 offers (EMV) Level 2 certification, allowing for applications where contactless payments are required. It offers PCI and SRED compliance for contactless payments using VISA, MasterCard, AMEX, JCB and Discover schemes. In addition, it also offers the reading of 1D/2D barcodes and NFC/RFID tickets and tokens from mobile phones, tablets, wearables, contactless cards and paper in any orientation. It offers an especially intuitive and quick interface for data reading and writing. It works with all popular contactless cards – including Mifare® (Classic®, Ultralight®, DESfire®, Plus) and Calypso®.

NO-NONSENSE INSTALLATION

TripTick Halo offers the ultimate no-nonsense installation. Its small

footprint, low profile, and choice of pole, surface or desk mounting options providing easy mounting in any application. Its rugged water-resistant construction with no moving parts, enables it to withstand years of public access use.

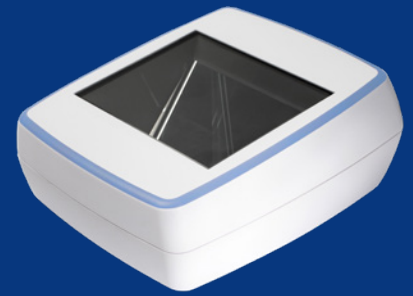
A 9-36V R10 power supply is included with standard connectors or can optionally, be supplied with M12 connectors for vehicle based transit applications.

PROVEN HERITAGE

The ATR220 TripTick Halo builds on the popular TripTick range of OEM readers. It delivers the same large active scan area of the OEM device to deliver robust barcode reading performance. Its optimised imaging ensures read reliability and high-speed performance; capturing and decoding all popular linear (1D), and 2D symbologies.

APPLICATIONS

- Self-service kiosks
- Payment via virtual storecard & storage of eReceipts
- Hotel Check-In
- Buses & Coaches
- Trams & Light Rail
- Metro & Subways
- Turnstiles and Gates
- Loyalty programmes



FEATURES:

- Contactless Capability - Works with all popular contactless cards & is cEMV - L2 Certification (VISA, MasterCard, AMEX, JCB, Discover) & The PCI Security Standards Council (PCI) Secure Reading and Exchange of Data (SRED) - V5.0
- Barcode Reading - Reads 2D, PDF417 and linear symbologies
- IP54 Ingress Protected - Sealed for integration into indoor/outdoor kiosks, podiums & gates
- Simple Installation - Single cable connection to host with options for pole, surface or desk mount
- Clear Feedback - Audio buzzer and multicoloured RGB light strip (user definable)
- Connection Options - USB (HID, serial or keyboard), RS232, Ethernet interface options
- Upgraded glass option available for extreme environments

ATR220 - HID® TripTick™ Halo






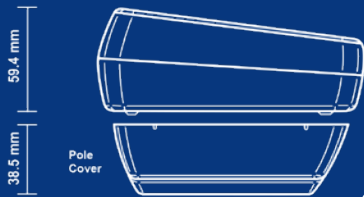
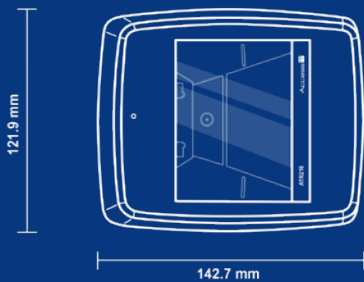
FEATURES

Connection Types

-  USB
-  Ethernet
-  RS232

Technology

-  NFC / RFID
-  QR/Barcode
-  cEMV



ATR220 - TripTick Halo

READING CAPABILITIES	
Barcode Symbologies Read	Linear: EAN, UPC, Code 2 of 5, Interleaved 2 of 5, IATA 2 of 5, Code 39, Code 128 2D: PDF417, Aztec, DataMatrix and QR codes Media types read: Smartphone/tablet/smartwatch displays & paper tickets
Contactless Reader	Supported media: ISO14443 type A and B cards (Java cards); max baud 424K (extendable to 848K) Mifare Ultralight (UL-C, UL-EV1), Mifare DESFire, Mifare Plus, Mifare Classic, Mifare SmartMX Operating frequency: 13.56 MHz Operating distance: Up to 40 mm
Contactless Payments	Integrated EMV L2 Payment Kernels with Level 2 Certification (VISA, MasterCard, AMEX, JCB, Discover) PCI SRED - V5.0
ELECTRONIC	
Power Supply	9-36V PSU (R10 automotive)
Interface	USB composite device, with: HID, CDC Serial or Keyboard interface for barcode reading CCID PC/SC interface for NFC Serial device, with barcode, NFC reader as separate devices (RS232) Ethernet
PHYSICAL	
Dimensions	Surface / Desk Mount 5 x 6 x 2 in (121.9 x 142.7 x 59.4mm) Pole Mount 5 x 6 x 4 in (121.9 x 142.0 x 97.9mm)
User Feedback	Visible/audible: Multicoloured RGB light strip (user definable) audio beeper
Active Scan Area	3.5 x 2.8 in (88 x 71mm)
Weight	23 oz (650g)
Body	Light Gray
Glass	4mm Toughened White Soda Lime; BS EN60068-2-75 & IEC 62262:2002, rated to 3.5J impact
MTBF	250,000 hours
THERMAL (AIR)	
Temperature	Operating -4°F to 140°F (-20°C to 60°C)
Storage	-22°F to 176°F (-30°C to 80°C)
Humidity	95% RH, non-condensing
APPROVALS	
EMC Approvals: FCC 47CFR Part 15 Subpart B Class A, UN ECE R10 (R10 Version Only) EN 55032 Class B (Non R10 Version), EN 55035 Radio: FCC Part 15 Subpart C, EN 301 489-1, EN 301 489-3, EN 300-330 Safety: IEC 62471, EN62368-1:2014 Ingress: IP54 certified to BS EN 60529:1992 Payment: EMV-L1, EMV-L2, PCI, TQM	

To learn more, please contact us at: access-is@hidglobal.com



hidglobal.com

North America: +1 512 776 9000 | Toll Free: 1 800 237 7769
Europe, Middle East, Africa: +44 1440 714 850
Asia Pacific: +852 3160 9800 | Latin America: +52 (55) 9171-1108
For more global phone numbers click here

© 2021 HID Global Corporation/ASSA ABLOY AB. All rights reserved.
2022-06-21-eat-atr220-triptick-halo-reader-ds-en PLT-06450
Part of ASSA ABLOY