

HID® L Scan™ Essentials

Primary Fingerprint and Palm Print Capture Software

HID L SCAN Essentials Software provides Microsoft Windows and Linux compatible components that allow application developers ready access to the livescan functions provided by a HID Global livescan device.

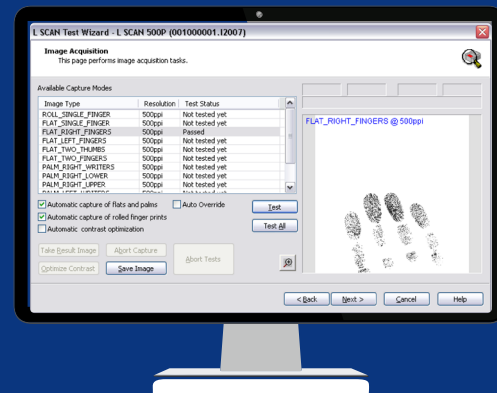
The software provides easy access to fingerprint and palm print devices from HID Global through the Application Programming Interface (API). These tools are provided for use by system administrators or service technicians.

The software provides tools to perform tests of scanner functions as well as sophisticated features that guarantee the highest quality capture.

Available as a runtime version as well as a software development kit (SDK), L Scan Essentials enables experienced system integrators to create their own applications for fingerprint and palm print devices.

The SDK contains several sample applications including source code to help developers understanding the processes as well as guiding through software development scenarios.

Comprehensive documentation covers all aspects of developing the device control and setting up the configuration, as well as using the tools. Example information includes SDK usage, API interface functions, API return codes, sequence diagrams, configuration files, logging functionality, sample applications, revision history, known issues and supported devices lists.



BENEFITS:

- One SDK for all HID Global finger print and palm print devices
- Comprehensive toolbox for software integration tests
- Configurable parameters for individual design/workflows of customer application
- Flexible upgrades with optional software features
- Easy to integrate API
- Compatible with HID Global middleware

HID L Scan Essentials

Product Name	L Scan Essentials
Auto Capture	Automatically captures fingerprints (flat and rolled) and palm prints and provides quality assessment and feedback
Perfect Image	<ul style="list-style-type: none">Generates crystal clear fingerprint and palm print images while eliminating condensation and dirt without modifying the fingerprint imageWorks independently of number of fingers, image size/resolution and silicone membrane
Perfect Roll	<ul style="list-style-type: none">Ensures that only high quality rolled fingerprint images are acceptedBuilt-in real-time quality check for slanting fingers, lifting of fingertips, vertical shiftingProvides user guidance to avoid mistakes during captureTakes rolled fingerprints at varying speedConfigurable quality thresholds for the Auto Capture function
FlexFlat	<ul style="list-style-type: none">Enables to capture flat fingers anywhere on the image capture areaApplicable for single, dual or four fingersSupported by Guardian, L Scan 500 and L Scan 1000
FlexRoll	<ul style="list-style-type: none">Enables to capture roll fingers on the entire width of the image capture areaWorks independent of roll direction and roll capture mode. Supported by Guardian
Spoof Detection (Optional)	<ul style="list-style-type: none">Provides spoof detection functionality to existing HID fingerprint scannersConfigurable FAR/FRR according to application by provided DET curves for each scannerAvailable for HID Guardian and HID Patrol
SYSTEM REQUIREMENTS	
Operating Systems	Windows 10, Windows 11, Linux® Ubuntu® and RHEL
SOFTWARE COMPONENTS	
Test and software updating tools	Test Wizard to retrieve and analyze all status information from PC, device and software; Firmware updater; Software license updater; TTrace application for troubleshooting analysis
DOCUMENTATION AND SAMPLE APPLICATIONS	
	Complete description of all API functions and return codes; Sequence diagrams; Configuration files; Sample applications including C++ source code & Visual Studio 2008 project files; Test clients for testing API functions and workflows; Revision history
SUPPORTED DEVICES	
	HID L Scan HID Guardian® 100, 200, module HID Patrol

Data subject to change without notice.



hidglobal.com

North America: +1 512 776 9000 | Toll Free: 1 800 237 7769

Europe, Middle East, Africa: +44 1440 714 850

Asia Pacific: +852 3160 9800 | Latin America: +52 (55) 9171-1108

For more global phone numbers click here

© 2022 HID Global Corporation/ASSA ABLOY AB. All rights reserved.

2022-09-26-eat-l-scan-essentials-ds-en PLT-04436

Part of ASSA ABLOY