

HID® Signo™ 25B Biometric Reader/Controller

13.56 MHz / 2.4 GHz Contactless

SRD Model: Signo 25B

PLT-04026 Rev. B.1



www.hidglobal.com/PLT-04027

- Scan the QR code or visit the link to see the multi-language electronic version of this document.
- Lisez le code QR ou suivez le lien pour consulter la version française de ce document.
- Escanee el código QR o visite el vínculo para consultar la versión en Español de este documento.
- Scannen Sie den QR-Code oder öffnen Sie den Link für die deutsche Version dieses Dokuments.
- Faça a leitura do código QR ou acesse o link da versão em português deste documento.
- Scansiona il codice QR o visita il link della versione Italiana di questo documento.
- Отсканируйте QR-код или перейдите по ссылке, чтобы получить версию этого документа на русском языке.
- この文書の日本語版を表示するには、QRコードをスキャンするか、リンクをクリックします。
- QR 코드를 스캔하거나 링크를 방문하면 이 문서의 한국어 버전을 볼 수 있습니다.

Supplied parts

- HID Signo Biometric Reader/Controller 25B (1)
- Installation Guide (1)
- Screw (1) - for attaching the reader to the backplate

Recommended parts (not supplied)

- Cable, 5-9 conductor (Wiegand), 4 conductor Twisted Pair Over-All Shield and UL approved, Belden 3107A or equivalent (OSDP)
- Certified LPS DC power supply
- Security tool HID 04-0001-03 (for anti-tamper screw)

© 2019 - 2020 HID Global Corporation/ASSA ABLOY AB. All rights reserved. HID, the HID Brick logo, the Chain Design, HID Signo, HID Biometric Manager, and HID Mobile Access are trademarks or registered trademarks of HID Global, ASSA ABLOY AB, or its affiliate(s) in the US and other countries and may not be used without permission. All other trademarks, service marks, and product or service names are trademarks or registered trademarks of their respective owners.



PLT-04026 B.0

Optional Features

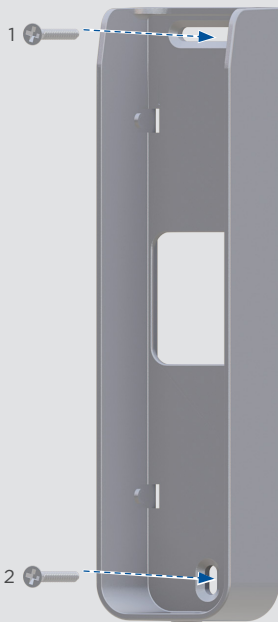
Open Collector Output - Controls an external device (5 VDC) operating in Host Mode only. Sink 40 mA / Source -1 mA.

Optical Tamper - If connected via the pigtail wires, the optical tamper will sink to ground from the default of 5 VDC when the reader is removed from its backplate.

Relay Output - Typically used to control a strike lock. Three contacts are available on the pigtail wires (common, normally open, and normally closed).

Wiegand Reader Interface - There is Wiegand output available, as marked on the pigtail wires. Configuration options are available within HID Biometric Manager™.

1 Mount the backplate

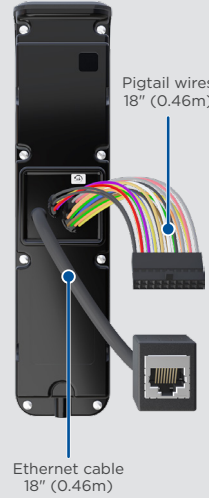


Screws not supplied.



ATTENTION
Observe precautions for handling
ELECTROSTATIC SENSITIVE DEVICES

2 Wire the 25B



Ethernet cable 18" (0.46m)

Function Group	Wire Color	Function	AWG	Max Length ¹
RS-485	Green	RS-485 A	24	4000 ft (1,219 m)
	Tan	RS-485 B		
	Black	RS-485 Ground		
Relay	Gray	Relay - Common	22	500 ft (152 m)
	Yellow	Relay - Normally Open		
	Orange	Relay - Normally Closed		
Inputs (Controller mode only)	Pink	REX Input (Supervised)	22	500 ft (152 m)
	Gray	DPS Input (Supervised)		
	Black	Input Ground		
Wiegand Port	Green	D0	22	500 ft (152 m)
	White	D1		
	Brown	RED		
	Orange	Green		
	Yellow	BUZ		
	Blue	Hold		
	Violet	TPR		
	Black	Ground		
	DC Power	Red		
Black		Power Ground		

Function Group	Connector	Function	Max Length
Network	RJ45 socket	Ethernet	328 ft (100 m) (CAT5/CAT5E/CAT6)

¹RS-485 = Max bus length 4,000 ft - 24 AWG (1,219 m)
Max length between nodes: 1,640 ft - 24 AWG (500m)

IMPORTANT: The 19 pigtail wires should be cut to size for wall mounted application.
IMPORTANT: DO NOT cut the Ethernet cable.

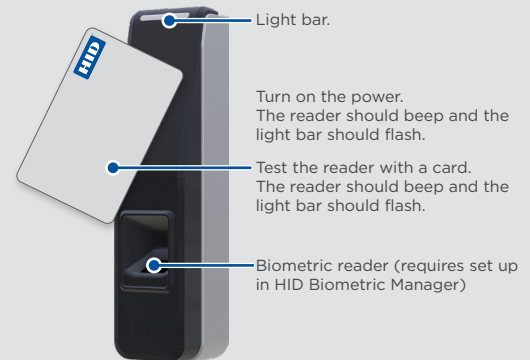
Note: Wiring the reader incorrectly may permanently damage the reader.

3 Secure the 25B to the backplate



1. Insert the reader into the backplate.
2. Latch the reader.
3. Secure the reader to the backplate using the supplied screw.

4 Power and test the reader



Light bar.

Turn on the power.
The reader should beep and the light bar should flash.

Test the reader with a card.
The reader should beep and the light bar should flash.

Biometric reader (requires set up in HID Biometric Manager)

5 Download and install HID Biometric Manager



Visit <https://www.hidglobal.com/signo25b> and download the **HID Biometric Manager Installer**. Once the **.exe** file has downloaded, double-click the file to install HID Biometric Manager, following the on-screen prompts.

For further details, refer to the *HID Signo Biometric Reader/Controller 25B Administration Guide* (PLT-04029), which is available for download from <https://www.hidglobal.com/signo25b>

Specifications

Input Voltage	Current			Operating Temperature
	Standby AVG ¹	Max AVG ²	Peak ³	
12 VDC	800 mA	1.5 A	2 A	-4° F to 150° F (-20° C to 66° C)

¹ Standby AVG - Root Mean Square current draw without a card in the RF field.

² Maximum AVG - Root Mean Square current draw during continuous card reads. Not evaluated by UL.

³ Peak - highest instantaneous current draw during RF communication.

Regulatory

UL

Connect only to a Listed Access Control / Burglary LPS power supply. These readers are intended to be used with listed (UL294) control equipment. Suitable for outdoor use.

Only Wiegand and Bluetooth communications have been evaluated by UL.

The Open Collector Output has not been evaluated by UL.

RS485 communications has not been evaluated by UL.

Inputs (reserved for future use) have not been evaluated by UL.

The Ethernet connection is for supplemental use; the unit is connected to an Access Control Panel.

The Signo 25B Biometric Reader is compatible with HID Mobile Access® version 3.3.1 and later using mobile devices with BLE version 4.2 and later listed at:

<https://www.hidglobal.com/mobile-access-compatible-devices>

Install in accordance with NFPA70 (NEC) Local Codes, Canadian Electrical Code CSA 22.1, and authorities having jurisdiction. Follow all National and Local Codes.

UL 294 Performance Levels

Model #	Access Control Line Security Level	Destructive Attack Level	Endurance Level	Stand-by Power Level	Conditions
25B	Level I	Level I	Level IV	Level I	

CE Marking

HID Global hereby declares that these proximity readers are in compliance with the essential requirements and other relevant provisions of Directive 2014/53/EU.

Por el presente, HID Global declara que estos lectores de proximidad cumplen con los requisitos esenciales y otras disposiciones relevantes de la Directiva 2014/53/EU.

HID Global déclare par la présente que ces lecteurs à proximité sont conformes aux exigences essentielles et aux autres stipulations pertinentes de la Directive 2014/53/EU.

A HID Global, por meio deste, declara que estes leitores de proximidade estão em conformidade com as exigências essenciais e outras condições da diretiva 2014/53/EU.

HID Global bestätigt hiermit, dass die Leser die wesentlichen Anforderungen und anderen relevanten Bestimmungen der Richtlinie 2014/53/EU erfüllen.

HID Global dichiara che i lettori di prossimità sono conformi ai requisiti essenziali e ad altre misure rilevanti come previsto dalla Direttiva europea 2014/53/EU.

Download copies of the Radio Equipment Directive (RED) Declaration of Conformity (DoC) at: <http://www.hidglobal.com/certifications>.

To ensure that RF exposure levels remain at or below the tested levels, a minimum safe separation distance of 10 mm between the user and the reader is required for RF exposure compliance.

Canada Radio Certification

This device complies with Industry Canada license-exempt RSS standard(s). Operation is subject to the following two conditions: (1) this device may not cause interference, and (2) this device must accept any interference, including interference that may cause undesired operation of the device.

Le présent appareil est conforme aux CNR d'Industrie Canada applicables aux appareils radio exempts de licence. L'exploitation est autorisée aux deux conditions suivantes : (1) l'appareil ne doit pas produire de brouillage, et (2) l'utilisateur de l'appareil doit accepter tout brouillage radioélectrique subi, même si le brouillage est susceptible d'en compromettre le fonctionnement.

FCC

This device complies with part 15, subpart C, of the FCC Rules. Operation is subject to the following two conditions: (1) This device may not cause harmful interference, and (2) this device must accept any interference received, including interference that may cause undesired operation. These limits are designed to provide reasonable protection against harmful interference. This equipment generate, uses and can radiate RF energy and if not installed and used in accordance with instruction, may cause harmful interference. Possible solution include: relocate the device, increase separation between equipment, power equipment separately, consult with your dealer.

CAUTION: Any changes or modifications to this device not explicitly approved by HID Global could void your authority to operate this equipment.

Taiwan

根據NCC低功率電波輻射性電機管理辦法 規定:

第十二條 經型式認證合格之低功率射頻電機，非經許可，公司、商號或使用者均不得擅自變更頻率、加大功率或變更原設計之特性及功能。

第十四條 低功率射頻電機之使用不得影響飛航安全及干擾合法通信；經發現有干擾現象時，應立即停用，並改善至無干擾時方得繼續使用。前項合法通信，指依電信法規定作業之無線電通信。低功率射頻電機須忍受合法通信或工業、科學及醫療用電波輻射性電機設備之干擾。

South Africa



Australia and New Zealand



UAE



Singapore



Brazil

Este equipamento não tem direito à proteção contra interferência prejudicial e não pode causar interferência em sistemas devidamente autorizados.

HID Powering Trusted Identities

PLT-04026 Rev. B.1

Americas & Corporate
611 Center Ridge Drive
Austin, TX 78758
USA
Support: 866-607-7339
Fax: 949-732-2120

Asia Pacific
19/F 625 King's Road
North Point, Island East
Hong Kong
Support: 852-3160-9833
Fax: 852-3160-4809

Europe, Middle East & Africa
3 Cae Gwrydd
Green Meadow Springs
Cardiff
CF15 7AB
United Kingdom
Phone: +44(0) 2920 528 500

Brazil
Condomínio Business Center
Av. Ermano Marchetti, 1435
Galpão A2 - CEP 05038-001
Lapa - São Paulo / SP
Brazil
Phone: +55 11 5514-7100

