

# BEEKs™ Patient Wristband

The HID BEEKs Patient Wristband is a Bluetooth Low-Energy (BLE) beacon that is worn around the wrist, like a watch to identify patients and supports real-time location applications.

Besides the easy location of patients in the hospital, healthcare facilities may use the signal provided by the BEEKs Patient Wristband to optimize workflows, waiting times or automatically create audit trails of treatments or hand sanitation.

BEEKs Patient Wristbands may be used along with BEEKs (Duress-) badges or Keyfobs worn by healthcare personnel or visitors for a more complete RTLS solution.

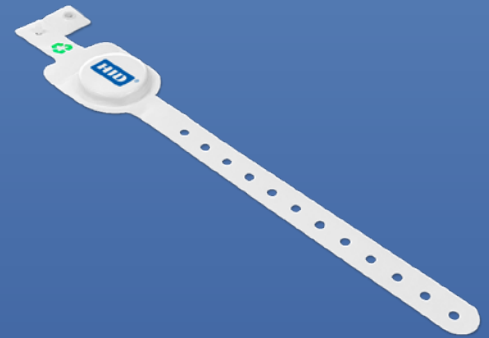
When combined with HID Global's end-to-end IoT Services ecosystem, that includes BluFi™ BLE to WiFi gateways and Bluzone™ cloud services, BEEKs can be centrally managed through the cloud to transfer new messages, firmware updates and battery status checks remotely. Their unique design allows BEEKs to broadcast reliably even in densely populated WiFi environments.

The extensible architecture allows organizations to scale deployments of standard beacon applications and extend to centralized management, real-time condition monitoring or location services in a later phase.

BEEKs Patient Wristbands have a typical lifetime of 30 days and are intended for single patient use.

Data in HID Bluzone™ is anonymized for privacy. A secure web-service API enables the hospital's application to consume the geo-coded location data and merge it with the hospital's business logic and user interfaces.

**For further information, contact**  
[iotsales@hidglobal.com](mailto:iotsales@hidglobal.com)

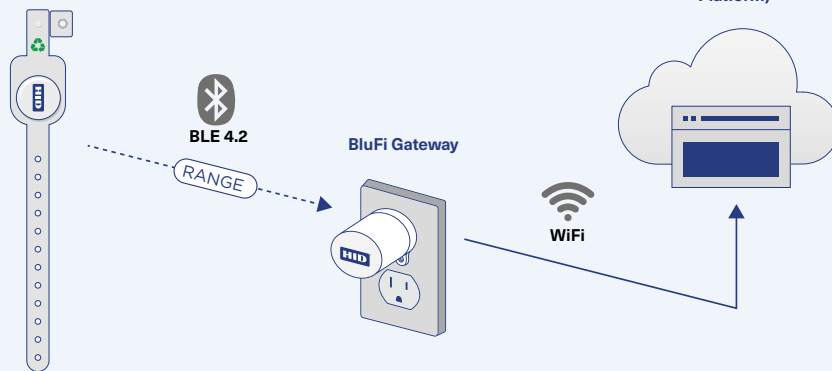


## CONFIGURABLE BLE WRISTBAND FOR HEALTHCARE LOCATION SERVICES

- Supports Real-Time-Location- Systems (RTLS) for Hospitals
- Flexible adaptation options (programming, printing)
- Compatible with HID Bluzone remote management, Eddystone and iBeacon

BEEKs Patient Wristband

Bluzone Cloud (Analytics, Management Platform)



# BEEKs Patient Wristband



## BEEKs Patient Wristband



<b>Base Model Number</b>	EMBC22
	<b>BEACON</b>
<b>Configuration Types</b>	Standard
<b>Part Number</b>	BVPAWS-EM20
	<b>RF SPECIFICATIONS</b>
<b>Bluetooth standard/ Protocol</b>	Bluetooth Low Energy (BLE) 5.0
<b>Frequency Band</b>	2400-2483.5 MHz
<b>Max Output power</b>	<10 dBm (e.i.r.p)
<b>Number of channels</b>	40
<b>Modulation</b>	GFSK
<b>Antenna/gain</b>	0dBm Single Antenna, Isotropic
<b>Mode of operation</b>	Half duplex
	<b>FEATURES</b>
<b>BLE Application Supported</b>	sBeacon
<b>Processor type</b>	ARC® EM4 32 bit 24 MHz
<b>Memory</b>	128KB
	<b>PHYSICAL</b>
<b>Length x Width</b>	1.5 in x 11.8 in x 0.4 in (39 x 300 x 10 mm)
<b>Mounting Method</b>	Clip
<b>Housing Material</b>	PVC
<b>Color</b>	White
<b>Weight</b>	0.3 oz (9 g)
	<b>BATTERY</b>
<b>Type</b>	CR-2032, 3V
<b>Life</b>	RTLS mode (Asset Tracking), advertisement every 500ms: 30 days Setting: sBeacon advertising Tx power: -4 dBm
	<b>CHEMICAL AND MECHANICAL RESISTANCE</b>
<b>Water</b>	IP67, 68° F (20° C), 3.3 ft (1 m) x 1 h
<b>Withstands Exposure To</b>	Water resistant
	<b>THERMAL</b>
<b>Storage</b>	-4° to +140° F (-20° to +60° C)
<b>Operating Temperature</b>	-4° to +140° F (-20° to +60° C)
	<b>OTHER</b>
<b>Standards</b>	FCC / IC
<b>MRI Compatible</b>	No (must be removed from patient before MRI)
<b>Aware Functionality</b>	No
<b>Box Size</b>	500 pcs.
<b>Warranty</b>	1 year



hidglobal.com

North America: +1 512 776 9000 | Toll Free: 1 800 237 7769

Europe, Middle East, Africa: +44 1440 714 850

Asia Pacific: +852 3160 9800 | Latin America: +52 (55) 9171-1108

**For more global phone numbers click here**

© 2021 HID Global Corporation/ASSA ABLOY AB. All rights reserved.

2021-05-03-idt-beeks-patient-wristband-ds-en

PLT-05934

Part of ASSA ABLOY